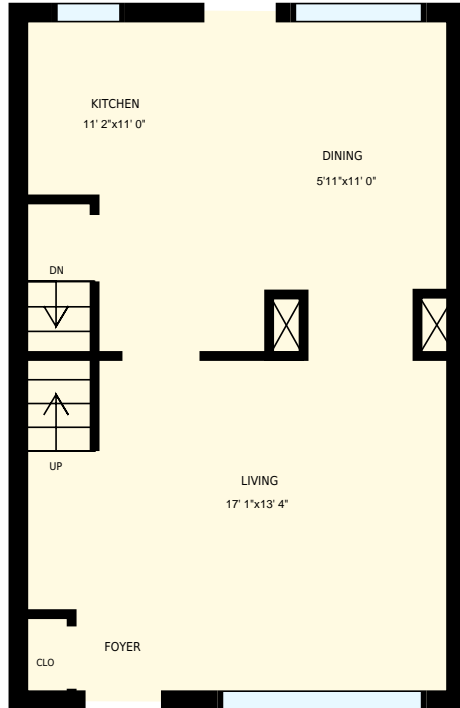


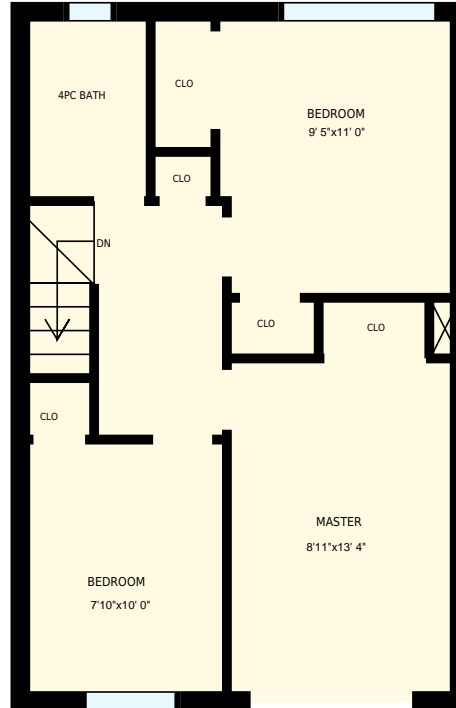


163 Kraft Ave, Kitchener, ON

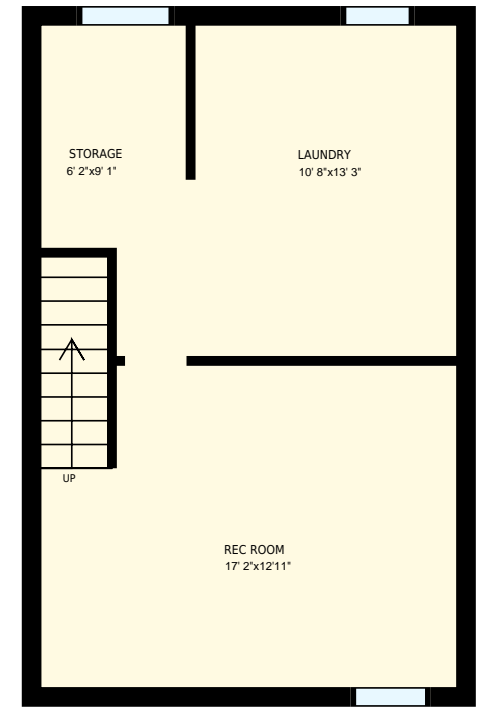
Total Exterior Area Above Grade 1086 sq. ft.



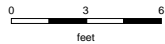
Main floor
Exterior Area 540 sq. ft.

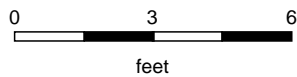
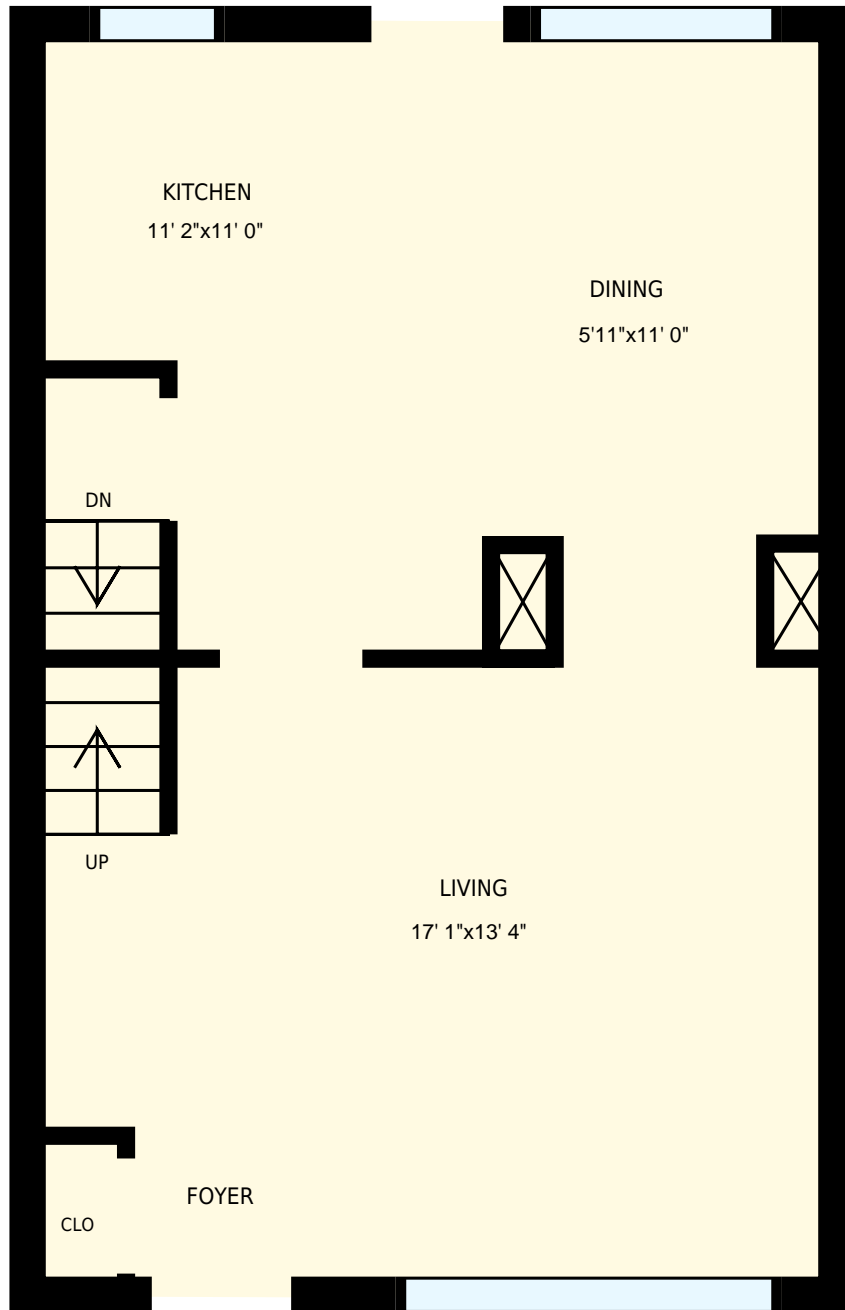


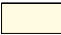
2nd floor
Exterior Area 546 sq. ft.

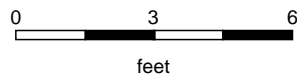
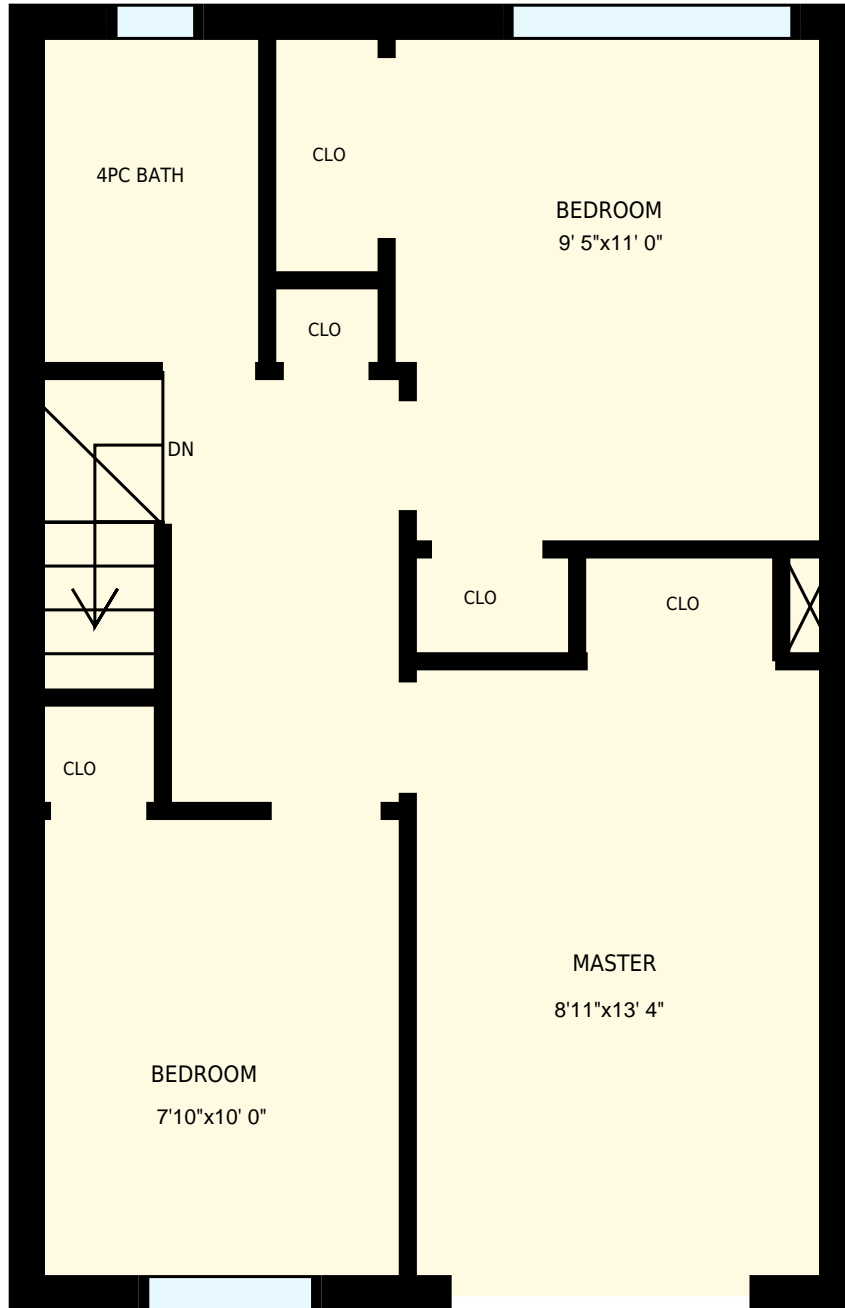


Basement





163 Kraft Ave, Kitchener, ON		PREPARED FOR:	
Main floor			
Interior Area	467 sq. ft.	 Included Area	PREPARED ON:
Exterior Area	540 sq. ft.		May, 2017
<small>All room dimensions and floor areas must be considered approximate and are subject to independent verification. For method of measurement please see https://youriguide.com/measure/.</small>			




163 Kraft Ave, Kitchener, ON

PREPARED FOR:

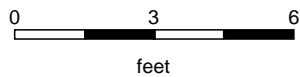
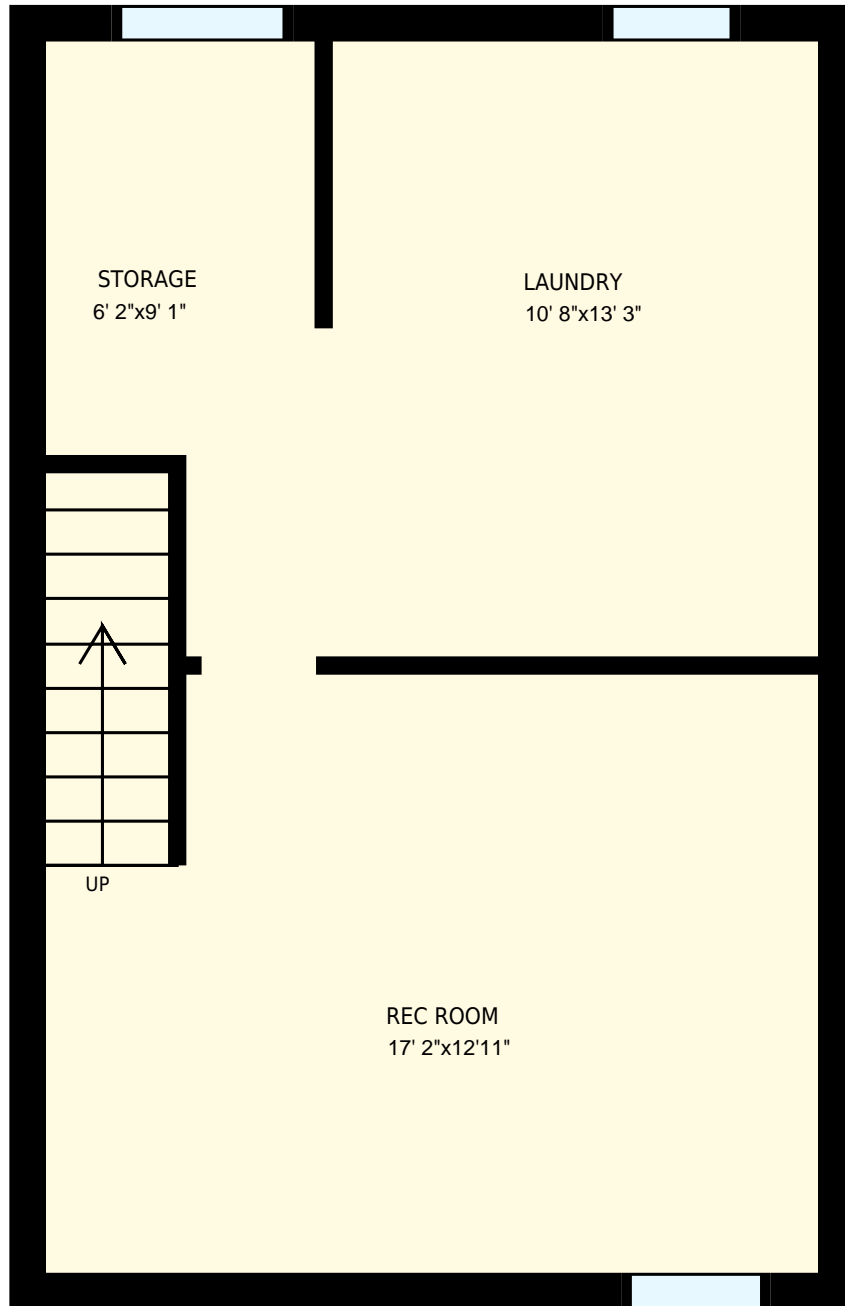
2nd floor

Interior Area 473 sq. ft.
Exterior Area 546 sq. ft.

 Included Area

PREPARED ON:
May, 2017

All room dimensions and floor areas must be considered approximate and are subject to independent verification.
For method of measurement please see <https://youriguide.com/measure/>.

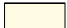


163 Kraft Ave, Kitchener, ON

PREPARED FOR:

Basement

Interior Area 459 sq. ft.
Exterior Area

 Included Area

PREPARED ON:
May, 2017

All room dimensions and floor areas must be considered approximate and are subject to independent verification.
For method of measurement please see <https://youriguide.com/measure/>.